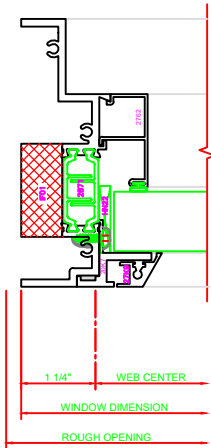


443 JAMB
 SERIES: 450G
 CASEMENT OUT
 4-BAR ARMS

444 JAMB
 SERIES: 450G
 CASEMENT OUT

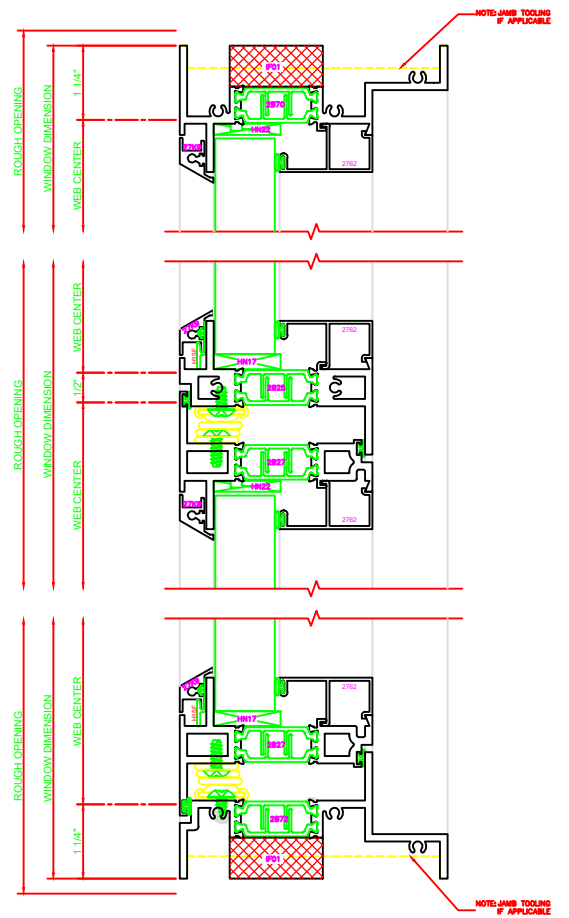


403 JAMB
 SERIES: 450G
 FIXED

100 HEAD
 SERIES: 450
 FIXED

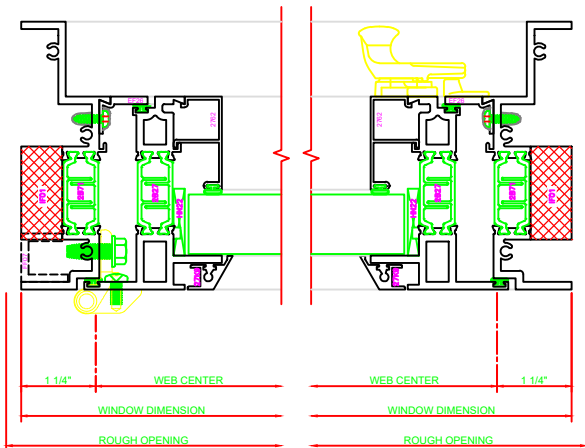
540 MEETING RAIL
 SERIES: 450G
 FIXED/C.O.
 4-BAR ARMS

240 SILL
 SERIES: 450G
 CASEMENT OUT
 4-BAR ARMS



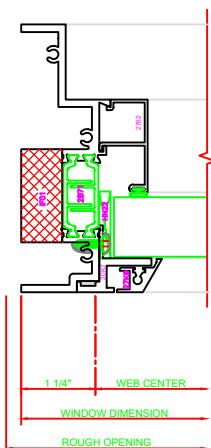
4-BAR ARMS BUTT HINGE

ERECTOR NOTE:
 THE HINGED JAMB FRAME SHALL BE
 INSTALLED PLUMB. ALL HINGES SHALL
 BE SECURELY BLOCKED AND
 ANCHORED TO THE CONDITION
 THROUGH THE HINGES OR AS CLOSE
 AS POSSIBLE TO THE HINGES.



445 JAMB
 SERIES: 450G
 CASEMENT OUT
 BUTT HINGE

444 JAMB
 SERIES: 450G
 CASEMENT OUT



403 JAMB
 SERIES: 450G
 FIXED

100 HEAD
 SERIES: 450
 FIXED

541 MEETING RAIL
 SERIES: 450G
 FIXED/C.O.
 BUTT HINGE

241 SILL
 SERIES: 450G
 CASEMENT OUT
 BUTT HINGE

